

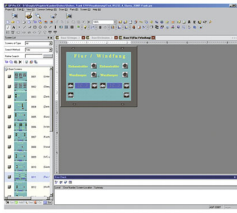
DATA SHEET

Web server

Article No. 37501182



[Internetlink](#)



Symbolic image

Function

The Dupline web server is great value-for-money PC-based display software that allows a Dupline system to be visualised and remotely operated. The software package contains a configurator for creating the control interface, the server itself for a DKG network (max. 32 DKG 20 or DKG 21-GSM) and a viewer for displaying and operating the interface. While the server requires a fixed connection for the DKG network, the interface can be operated with a corresponding network connection from anywhere using the viewer or even with a standard browser.

Features

software package for creating and operating simple display interfaces, existing configurations of channel generators DKG 20 and DKG 21-GSM can be saved at the push of a button, supports standard browsers, such as Firefox, for the display, compatible with Windows operating systems with Java runtime

Applications

The web server is primarily suitable for small display applications in private and in some commercially used buildings. Due to its easy configuration and operation, it can also be used for end users.

Notes

A demo version of the software can be found on our homepage at <http://www.doepke.de>.

Technical Data	Web server
Series	Web server
Operating system	Windows 2000 (SP3), Windows 2003, Windows 7, Windows Vista, Windows XP
Languages	English, Danish
Description	General data