



DATA SHEET
installation sockets
RDS 6
Sockets for mounting rails
Article number 09980028



[Internetlink](#)



Function

Devices in this category are sockets with a protective contact for installation in distributors. The RDS series consists of sockets for installation in distributors in accordance with DIN 49440 with a protective contact. In contrast with the RDS 6, the RDS 9 has a hinged socket to protect against foreign objects.

Features

design for 250 V/16 A, module width 2.5 units, protection class IP20

Mounting

quick fastening to mounting rail, any installation position

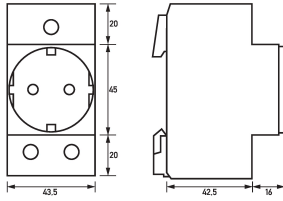
Applications

The flush-mounted sockets are mostly used in private and commercially used buildings, in order to distribute a power supply for 230 V equipment in the distribution board (e.g. portable lamp, drills, etc.)

Technical Data

Technical Data	RDS 6
Series	RDS 6
Flush-mounted plug sockets design	Schuko
	load circuit
Rated voltage (AC)	250 V
Rated current (AC)	16 A
Rated frequency	50 Hz
	General data
Operating position	optional
Storage temperature	-40 °C ... 70 °C
Ambient temperature	-25 °C ... 35 °C
Mounting type	Wall mounting
Housing material	thermoplastic
Protection class	IP20
Width	44 mm
Height	85 mm
Depth	65.5 mm
Installation depth	65.5 mm
Width (modules)	2.5
Design requirements/Standards	EN 60715

Dimensions



Dimensional drawing Group view