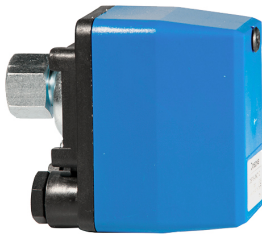




[Internetlink](#)



**DATA SHEET**  
**pressure switches**  
**DSP 06-2**  
**for pumps**  
 Article number 09921060

symbolic image

**Function**

Pressure switches are mechanical or electronic switches that are activated by pressure changes in a gaseous or liquid medium, such as air or hydraulic fluid. They are used, for example, to switch pumps, valves or compressors so that the pressure or fill level of the medium in a pressurised storage tank does not exceed the upper value or fall below the lower value. The mechanical pressure switches of series DSP are suitable, depending on the design, for switching single to three-phase motors for pumps. The increasing pressure of the medium to be monitored presses against a membrane of the pressure switch. As soon as the pressure exceeds the upper switching point, the NC contact opens and switches off the connected motor. If the pressure drops below the lower switching point, the contact goes back to its idle position and the motor starts. The pressure switches allow both the switch-off pressure and pressure difference to be set. The pressure connection, pressure sensor element, switching mechanism and electrical connections are mounted on a high-quality plastic base plate. The cover protects the switch from environmental influences.

**Features**

user-friendly mounting and installation, NC contacts for one to three-phase motors, adjustable switch-off pressure and pressure difference, compact design, cable gland fitted with strain relief as standard, protection against direct contact as per VDE 0106, part 100

**Mounting**

The devices are mounted via the threaded connection immediately near the pressure tank. The robust plastic housing is appropriate for protecting against splashing water from all sides.

**Applications**

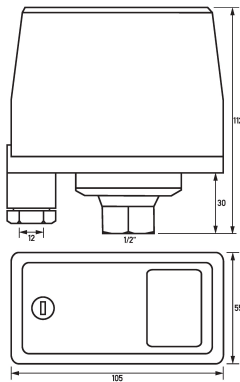
The pressure switches of the DSP series can be used for monitoring and controlling the pressure of liquids in pipes and tanks and for automatically switching pump motors, e.g. for water supply.

**Technical Data**

Technical Data	DSP 06-2
Series	DSP 06-2
Number of (n.o, n.c., change-over)	0 2 0
Manual operating mode possible	false
Flange diameter	1/2"
Pressure range	1.5 bar ... 6 bar
Adjustment range pressure difference	1.5 bar ... 3.2 bar
Specification	load circuit switching contact
Number of poles	2
Rated voltage (AC)	230 V (207 V ... 440 V)
Tolerance of rated voltage	-10 % ... 10 %
Rated current (AC)	16 A
Rated frequency	50 Hz ... 60 Hz
Allowed types of wires	screw-type terminal bottom (load circuit) copper conductor, solid conductor

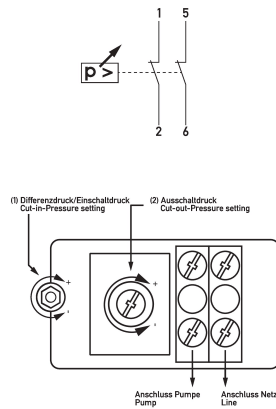
Technical Data	DSP 06-2
Connection C1 Maximum number of conductors per terminal	2
	General data
Operating position	optional
Mechanical endurance	min. 350000 switching cycles
Storage temperature	-20 °C ... 80 °C
Ambient temperature	0 °C ... 50 °C
Mounting type	Device extension
Housing material	ABS
Protection class	IP54
Width	112 mm
Height	105 mm
Depth	55 mm
Installation depth	55 mm

**Dimensions**



Dimensional drawing Group view

**Wiring example**



Wiring diagram

Wiring diagram with operating elements