

DATA SHEET

DCI 2

Article number 09501222



[Internetlink](#)

Function

"Couplers for external systems" are devices that can send and receive external voltages or protocols. For this reason they can also be called interfaces. The DCI 2 serial-to-Ethernet port server is capable of linking serial components, such as e. g. the DKG 20 or DKG 21-GSM, to an Ethernet network. The link-up is established on the one side directly serial (RS 232/422/485) at the device to be connected, and on the other side at a 10 Mps Ethernet network. If a PC with Windows or Linux software is connected to the network side, the driver software will emulate a serial communication port, which can be utilized by an application software such as e. g. ProLineNG.

Features

Interfaces: LAN: 10BaseT / serial: RS-232/422/485, number of serial ports: 1, Communication parameters: parity: None, Even, Odd, Space, Mark / data bits: 5, 6, 7, 8 / stop bits: 1, 1.5, 2 / data rate: 50 bps ... 230.4 Kbps, Protocols: TCP, IP, UDP, Telnet, RTelnet, DHCP, ICMP, Supported operating systems: Windows 8/7/XP/2000/NT/ME/98/95 / Linux, Operating modes: driver mode, TCP server/client, UDP server/client, Ethernet modem, pair connection, Power supply: 12..30 V DC, max. 150 mA

Mounting

Surface-mounted/can be mounted on DIN-rail

Applications

Remote maintenance/configuration of DKG 20/DKG 21-GSM, General factory/building automation

Notes

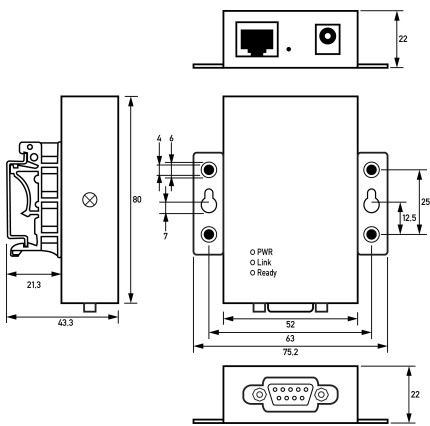
Includes plug power pack (230 V AC), configuration software and documentation, Optional DIN-rail mounting kit upon request

Technical Data

Technical Data	DCI 2
Series	DCI 2
design	Dupline
Serial IF IF1 Specification	Ethernet (LAN)
Serial IF IF1 Protocols	TCP, UDP, IP, ICMP, DHCP, BootP, Telnet, DNS, SNMP, HTTP, SMTP
Serial IF IF2 Specification	RS 232-C
Operating voltage (DC)	24 V (12 V ... 48 V)
Current consumption (DC)	max. 0.2 A
Type	Display Supply voltage LED (red, green)
Type	Display Ethernet-Verbindung LED (orange, green)
Type	Display Datenübertragung LED (orange, green)
Type	RJ45 (Serielle Schnittstelle) DSUB 9-pole (Serielle Schnittstelle)
General data description	General data
Operating position	any
Ambient temperature	0 °C ... 55 °C
Permissible humidity	5 % ... 95 %

Technical Data	DCI 2
Housing type	wall-mounted housing
Mounting type	Mounting rail
Housing material	Steel
Protection class	IP20
Width	52 mm
Height	80 mm
Depth	22 mm
Width with lugs	75.2 mm
Height with lugs	80 mm
Depth with lugs	22 mm

Dimensions



Dimensional drawing Group view