

DATA SHEET

DWS 1

Article number 09501197



[Internetlink](#)



Function

Sensors detect digital or analogue properties qualitatively or quantitatively, assess these and convert them to a system-compatible format. Typical examples are temperature and brightness. The DWS 1 water stop sensor is a component of the Dupline installation system and allows the detection of water penetration and the transmission of the alarm on the Dupline bus. The sensor has two Dupline channels: the alarm channel and a channel for transmitting signs of device function. While the alarm channel is only activated when water penetration is detected, the vital data channel is permanently switched on.

Features

Dupline sensor for detecting water penetration, alarm signal and signs of device function, easy mounting, Power supply from the Dupline bus

Mounting

Surface mounting

Applications

The sensor is suitable for monitoring water penetration, amongst other things, in utility rooms, basements and elevator shafts

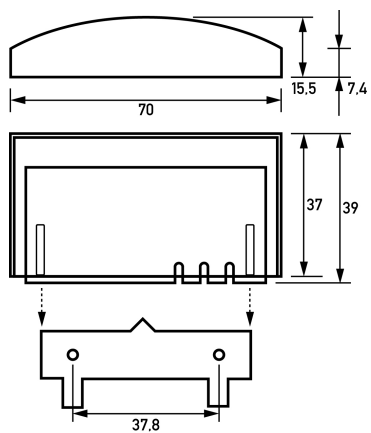
Notes

The sensor is protected against brief immersion in water. It must not be immersed for longer periods of time in water or used to detect other liquids.

Technical Data

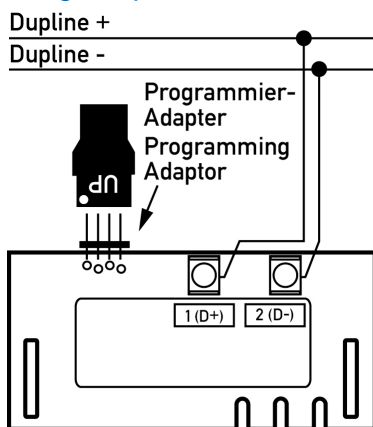
Technical Data	DWS 1
Series	DWS 1
design	Dupline
max. IF Bus system input channel	2
current consumption bus	1300 µA
Operating voltage source	Bus signal
	Sensor input
Rated voltage (DC)	max. 8 V
max. Input I1 contact internal resistance	470 kOhm
	Screw-type terminal (Bus connection)
Clamping area	0.4 mm ² ... 0.8 mm ²
General data description	General data
Ambient temperature	-20 °C ... 50 °C
Housing type	wall-mounted housing
Mounting type	Wall mounting
Housing material	ABS resin
Protection class	IP67
Width	70 mm
Height	40 mm
Depth	16 mm

Dimensions



Dimensional drawing Group view

Wiring example



Wiring diagram