

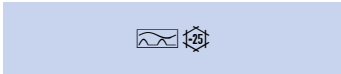


symbolic image

**DATA SHEET**  
**residual current transformer**  
**MFIW 035/1,0**  
**sensitive to pulsating and alternating currents Type A**  
**Article number 09340211**



[Internetlink](#)



**Function**

Residual current transformers in combination with evaluation units are suitable for the protection or monitoring of electrical circuits. The transformers have a large selection of opening cross-sections (rated currents). For this reason is it possible to protect and monitor electrical systems with large conductor cross-sections, i.e. with high currents and high voltages. Transformers form series MFIW combine with the MFR evaluation unit to form a modular residual current device (MRCD) as per VDE 0660-101. Residual current transformers with characteristic A detect sinusoidal AC currents as well as pulsating DC residual currents. The transformer covers all of the active conductors leading to the consumers and uses its output signal to illustrate the time curve of the sum of all conductor currents flowing through it. Its output signal is proportional to the residual current, which flows back to the earthing point of the supply mains via the protective earth conductor in the case of an insulation fault or via the earth.

**Features**

suitable for detecting type A and AC residual currents as well as pulsating DC residual currents , tightly stacked through-holes allow good adjustment to the cable to be monitored, rated residual current is determined by the selected transformer, terminals up to 4 mm<sup>2</sup>

**Mounting**

The devices are mounted on stable substrata using the supplied mounting brackets. any installation position

**Applications**

Transformers from series MFIW are used in combination with series MFR modular residual current devices.

**Notes**

The through-hole should be filled as much as possible with the cable to be monitored, so that it is centred in the transformer. Faulty tripping caused by the transformer being asymmetrical can therefore be avoided.

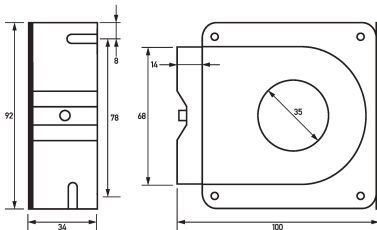
**Technical Data**

| Technical Data                             | MFIW 035/1,0                             |
|--|--|
| Series                                     | MFIW 035                                 |
| Current transformer specification          | residual current transformer             |
| Current transformer suitable for           | MFR                                      |
| Residual current detection characteristic  | A, AC                                    |
| Residual operating current I <sub>Δn</sub> | max. 1 A                                 |
|  | transformer, primary side                |
| Rated voltage (AC)                         | 0 V ... 690 V                            |
| rated impulse withstand voltage            | 8 kV / Kategorie IV                      |
| Rated current                              | 125 A                                    |
| Rated frequency                            | 50 Hz ... 60 Hz                          |
|  | transformer, secondary side              |
| Rated current strength secondary           | 1 A                                      |
|  | screw-type terminal (transformer output) |
| Protective cover available                 | true                                     |

Subject to technical changes

| Technical Data                       | MFIW 035/1,0                          |
|--------------------------------------|---------------------------------------|
| max. Connection C1 cable length      | 10 m (e. g. LiY 0.5 mm <sup>2</sup> ) |
| max. Outer diameter Connection cable | 23 mm                                 |
| Clamping area                        | max. 4 mm <sup>2</sup>                |
| Cross section flexible with ferrule  | max. 0.6 mm <sup>2</sup>              |
| Tightening torque                    | max. 0.6 Nm                           |
|                                      | General data                          |
| Operating position                   | optional                              |
| max. Operating altitude above MSL    | 2000 m                                |
| Storage temperature                  | -40 °C ... 85 °C                      |
| Ambient temperature                  | -25 °C ... 65 °C                      |
| Housing type                         | wall-mounted housing                  |
| Installation type                    | Wall mounting                         |
| Housing material                     | polycarbonate (PC)                    |
| Protection class                     | IP20                                  |
| sealable                             | true                                  |
| Width                                | 34 mm                                 |
| Height                               | 92 mm                                 |
| Depth                                | 100 mm                                |
| Installation depth                   | 100 mm                                |
| Inside diameter                      | 35 mm                                 |
| Design requirements/Standards        | VDE 0660-101 Part M                   |

**Dimensions**



*Dimensional drawing Group view*