

# New products

- switching devices with mains monitoring
- DFS B SK FANA
- DPRCD-M+
- DRCBOs for the energy transition
- red MCBs, 3-pole
- DFS 4 A HT

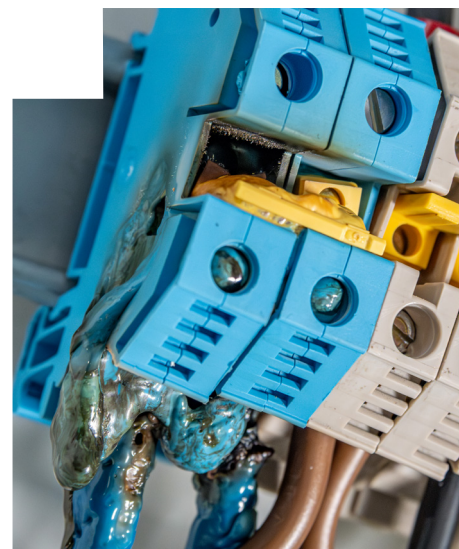




## Focus on the neutral conductor – switching devices with mains monitoring

**Interruption of the neutral conductor** – *One of the most common causes of damage to electronic equipment is an interruption of the neutral conductor. If the line conductors are loaded asymmetrically, this results in a neutral point shift, which in turn causes overvoltage or undervoltage. The consequences may include damage or malfunction of connected electronic devices, or, in the worst case, fires.*

**The solution:**  
safety through mains monitoring



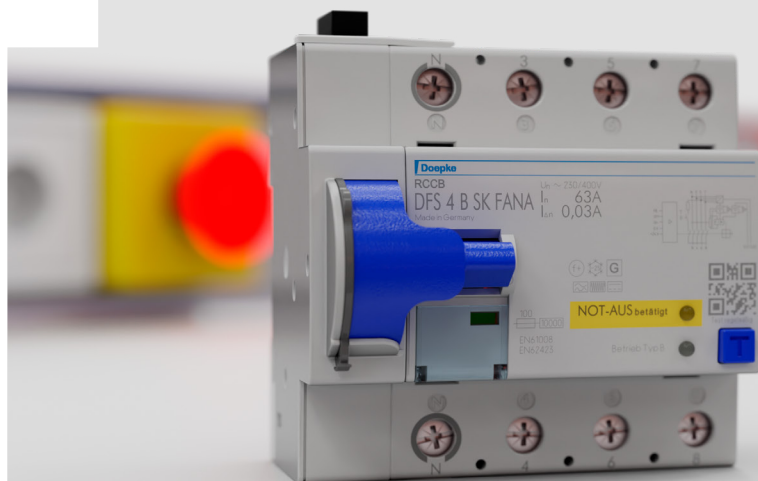
Residual current circuit-breakers (DFS) and main switches (DHS) of the NU series monitor all line conductors and the neutral conductor on the supply side. The DHS NUS main switch additionally monitors the neutral rail using a dedicated sensor. In the event of a fault, all mains conductors are disconnected on NU devices, while on the DHS NUS only the line conductors are disconnected.

# DHS/DFS FANA – reliable switch-off and easy switch on

*The DFS 4 B SK FANA RCCBs and the DHS 4 FANA switch-disconnectors combine an emergency switching-off function and remote operation in one compact protective device. As soon as a connected emergency stop button is pressed, they fully disconnect all poles of the electrical supply from the connected system components. It's easy to switch back on using the remote control, without having to go a long way to the electrical distribution board.*

- remains closed in the event of a voltage drop
- supports the connection of multiple emergency stop buttons
- residual current circuit-breaker or switch-disconnector, emergency switching-off function and remote operation all in one compact device
- DFS 4 B SK FANA and DHS 4 FANA (in combination with a Type B RCD) meet the requirements of DIN VDE 0100-723.
- for electrical experimental equipment in schools, laboratories and research institutions

emergency  
switching-off  
& remote  
operation



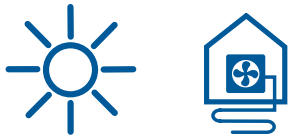
mobile  
personal  
protection



## DPRCD-M – the core component for personal protection switches

*The DPRCD-M is a compact module for assembling a five-pole personal protection switch. Installed in a suitable housing, it becomes a mobile PRCD that can be connected between three-phase socket and load. The DPRCD-M combines an AC-DC sensitive residual current device with monitoring of the mains conductors and the protective conductor. For increased safety in mobile applications where upstream protective measures are unknown.*

- protective conductor monitoring
- undervoltage release
- mains conductor monitoring
- external residual current detection
- optional counter-clockwise rotating field interlock
- all-pole disconnection, including protective earth conductor
- single toggle operation
- available as Type B SK and Type B+
- subsidised through BG Bau (German Social Accident Insurance Institution for the Construction Sector)



# Compact safety for the energy transition

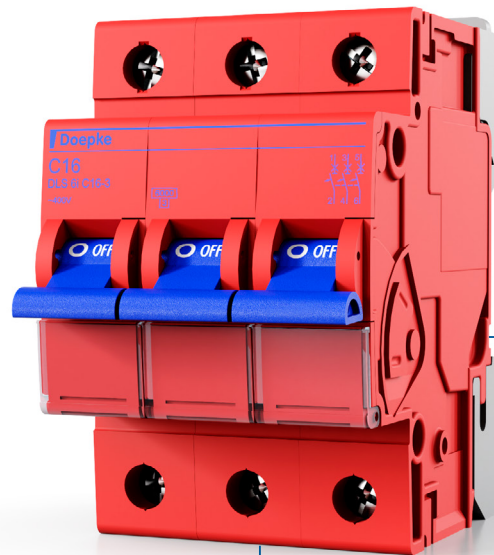
## RCBOs for photovoltaic systems and heat pumps

With the expansion of renewable energy, the demand for photovoltaic systems and heat pumps has grown worldwide. Technologies for the sustainable generation and use of energy also require future-proof strategies for their protection. This is why the DFS PV and DFS HP residual current protective devices are available, and now also the DRCBO PV and DRCBO HP RCBOs, specifically for the requirements of photovoltaic systems and heat pumps. For sustainable safety.

- maximum protection for photovoltaic systems and heat pumps
- meets the regulatory requirements for operating facilities at risk of fire
- PV- or HP-optimised short-time delay
- easy allocation in the control cabinet thanks to clear labelling
- energy-efficient thanks to minimal power dissipation



# At a glance

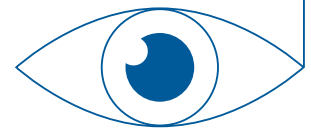


## Our "red" MCBs

According to DIN VDE 0100-560 (Equipment for safety purposes) switchgear and control gear must be clearly labelled. With their red housing, the DLS 6i RT are visible at a glance in the control cabinet, eliminating the need for electricians to apply labels or markings. DLS 6i RT are available in one-pole and three-pole versions.

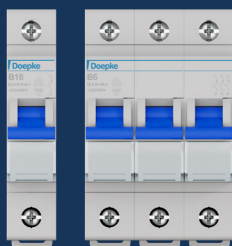
Typical applications include:

- safety lighting
- fire alarms
- smoke and heat ventilation systems



## miniature circuit-breaker product series:

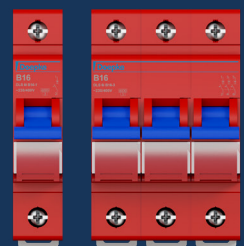
DLS 6h



DLS 6hsl DLS 6i



DLS 6i RT

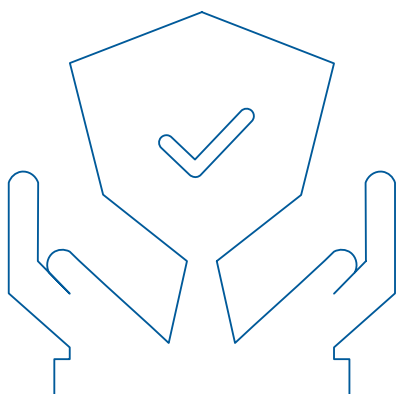




# Heat-resistant residual current protection

The DFS 4 A HT (high temperatures) is particularly resistant to high temperatures. This makes the pulsating and AC-sensitive RCCB ideal for use in outdoor distribution boards exposed to strong sunlight and in other locations subject to high temperatures.

- operates reliably at temperatures up to 75 °C
- delivers full rated current of 40 A even under heat
- no derating up to 75 °C
- with enhanced resistance to cold, dust, corrosive gases and humidity



**PREMIUM** | **MARKEN**  
Partner 

# Doepke

**Doepke** Schaltgeräte GmbH  
Stellmacherstraße 11  
26506 Norden

@ — info@doepke.de  
T — +49 (0) 49 31 18 06-0  
F — +49 (0) 49 31 18 06-101

www — [doepke.de/en/](https://doepke.de/en/)